



VSAN
Sensors



**For all
Sensor
Solutions**



VSAN
Sensors

Vsan Sensors

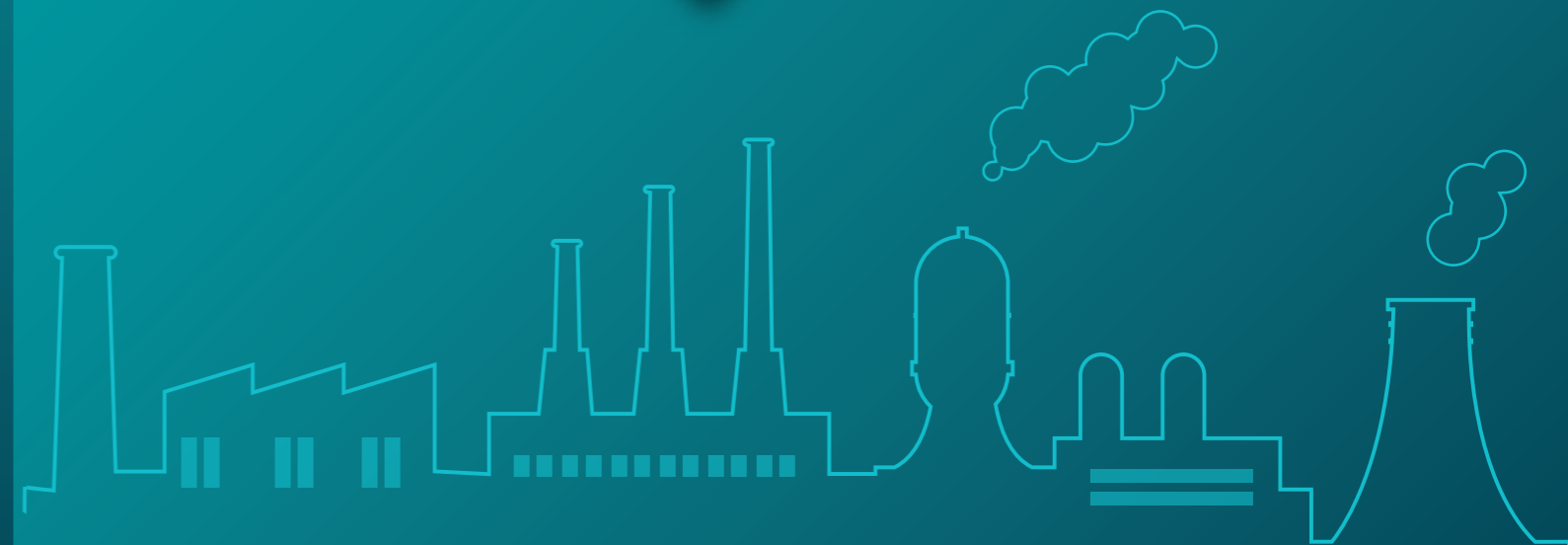
No: 13, F-2, Sai Nagar, Porur Garden Phase-1,
Vanagaram, Chennai - 600 095.

Tel: 044 4853-1757

Mobile: +91 97514-75618 / +91 99620-98274

Email: sales@vsansensors.com / vsansensors@gmail.com

Web: www.vsansensors.in





ABOUT US

Incorporated in the year 2012 at Chennai, Tamil Nadu, we "Vsan Electricals & Sensors" are a sister concern of "VSAN Groups", engaged as the manufacturer of Flow Meter, Level Transmitter, Float Switch and many more. In order to keep pace with the never-ending demands of customers, we are involved in offering a wide range of these products. Our offered products are widely known for their impeccable quality, seamless finish and best-grade material. We are also providing Installation Service and Flow Meter Repairing Service.

OUR PRODUCTS

VSAN is a manufacturer, importer and exporter of equipment & machinery in the Indian subcontinent since 2012. The company started climbing up the corporate ladder as a pioneer in upgrading industrial technology, creating infrastructure and supplying world-class process instruments, powder processing instruments and Vacuum systems. Research and development formed the core of the competence. The expertise honed over 6 Decades of successful operation has enabled us to place our brand name in synonym with quality and reliability. We work in close partnership with our clients and keep upgrading our products and processes to stay relevant to the advancing

Our Specialization

The company is specialized in providing cost effective and customized solutions in Level Monitoring to meet customer specific requirements. We focus on the areas like process industries, system integrators, Engineering Procurement & construction (EPC) and original equipment manufacturers to provide hassle free solutions to our clients. We have successfully risen to the challenges imposed by changing market scenario. Our infrastructure is fully capable to produce quality products and meet timely delivery.

Quality Assurance

We provide high quality products, which we test at every stage of the production process. We manufacture our products from fine quality raw material, which we procure from reliable sources.

PULL CARD SWITCH

Features:

- Universal (common) cast aluminum/ DMC enclosure
- Same overall and general mounting dimensions and hence reduction in variety of mounting brackets
- Rationalized design and construction allows inter changeability of parts
- Special rubber seal (O ring) on shaft for better protection against ingress of dust, dirt etc.



Standard Specifications:

- Enclosure: Weatherproof, field moulding type, IP 65 cast AL/ cast iron, epoxy painted, color light gray
- DMC (FRP) enclosure for use in corrosive environment
- Special flame proof enclosure for use in hazardous area, group LLA, LLB, LLC
- Output contacts: 1NO + 1NO/ 2 NO + 2 NC
- Contact rating for standard models : 16 amp resistive at 440 Vac
- Contact rating for models with reed switch contact: 30 VA, 24 Vdc/ 230 Vac, , 1 amp (please specify your control voltage)
- Reset pull cord switch: manual reset type
- Belt sway switch: auto reset typ

Pull cord switch series(PSW):



Application:

Pull cord switch also known as rope operated emergency switch is used as a safety switch to stop the conveyor belt in case of an emergency.

Construction:

Pull cord switch is housed in dust and weatherproof enclosure with ip65 grade of protection. Study and heavy - duty cam - switch with robust contacts is used to give longer service life. Operating handle fitted with spring steel rings at both ends for fixing the rope. The design of the rings gives maximum flexibility in operating condition. Enclosure is epoxy painted to give high corrosion resistance. The switch is designed with manual reset type of mechanism.

Operation:

Pull cord switch is mounted on the walkway side of the conveyor belt, preferably at about every 20 meters. When the rope is pulled from any side. The switch is operated . Unless and until the handle is reset to normal position manually, the switch remains in operated condition

Belt swav Switch



Features:

Universal (common) cast aluminum/DMC enclosure
 Same overall and general mounting dimensions and hence reduction in variety of mounting brackets
 Rationalized design and construction allows inter changeability of parts
 Special rubber seal (O ring) on shaft for better protection against ingress of dust, dirt etc

Standard specifications:

Enclosure: Weatherproof, field mounding type, ip65 cast AL/ cast iron, epoxy painted, color light gray
 DMC (FRP) enclosure for use in corrosive environment
 Special flame proof enclosure for use in hazardous area, group II a, II b, II c
 Output contacts : 1NO + 1NO/ 2NO + 2 NC
 Contact rating for standard models : 16 amp resistive at 440
 Contact rating for models with reed switch contact : 30 VA, 24 Vac
 230 Vac, , 1 amp. (please specify your control voltage) Vdc/

Belt Sway Switch Series(BSW):



Application

The switch allows smooth running of the conveyor and protects it from damages by over swaying which can occur due to uneven loading of material, worn out idler roller bearings etc.

Construction:

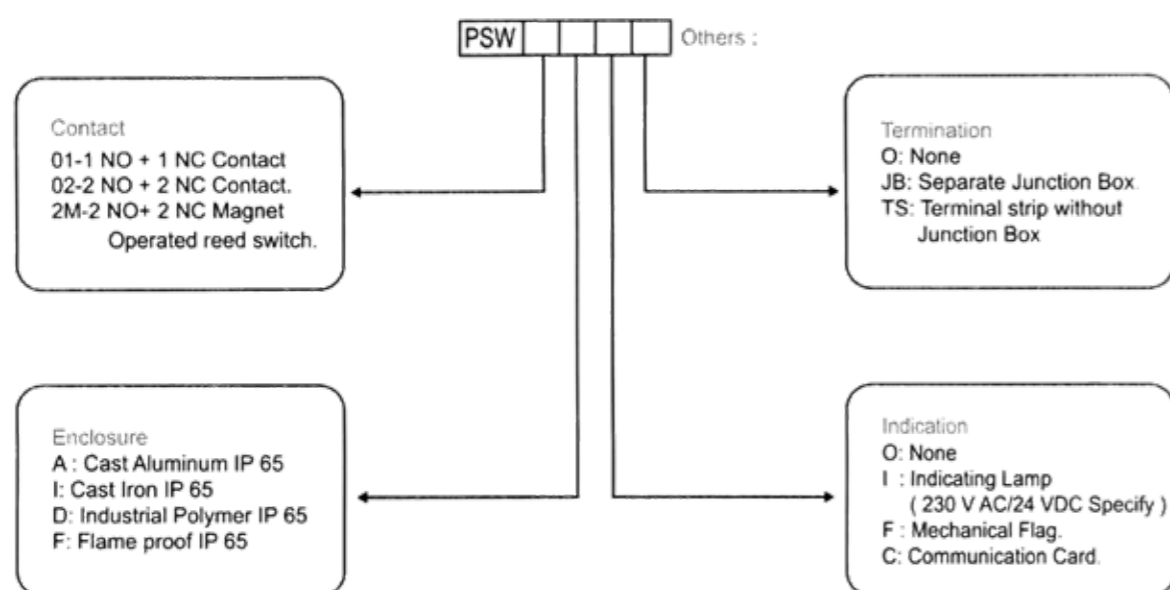
The switch is housed in dust and weatherproof enclosure with ip65 grade of protection. The contact roller is supported on poly plastic bearing (delrin) having high relativity of lubrication s and the lowest coefficient of friction. This assures smooth operation of the roller over a long period of the time. Roller mechanism is of self reset type. The enclosure is epoxy painted to withstand harsh climate.

Operation:

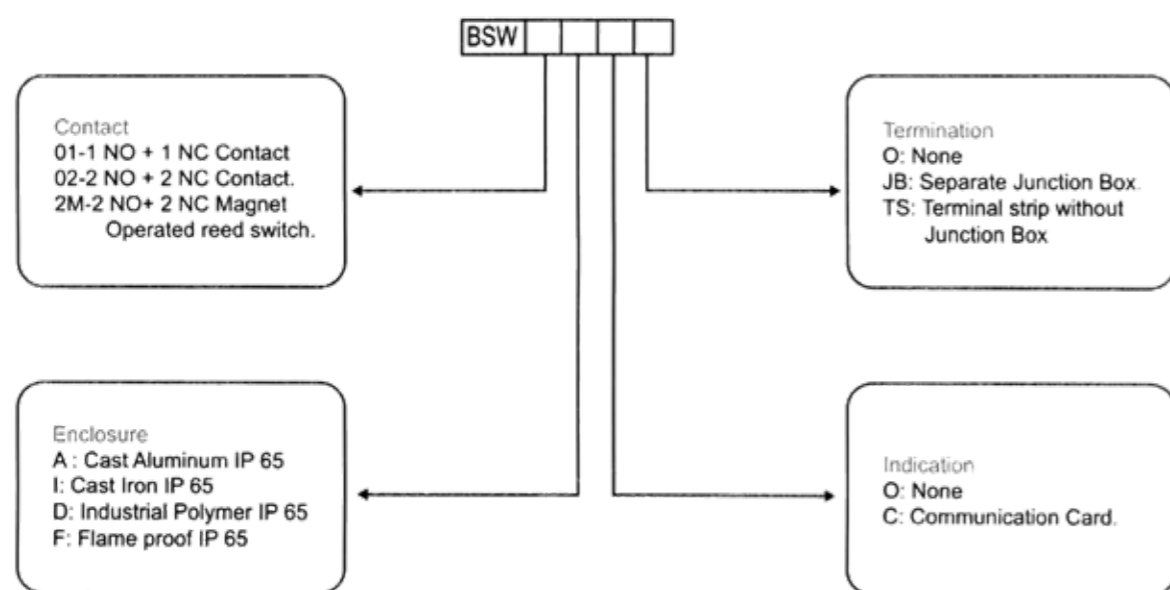
For normal running of the belt with acceptable swaying, the belt-sway switch is generally mounted on both sides and near the edge of the conveyor belt. A is generally mounted on the both sides and near the edge of the conveyor belt. A small clearance is allowed between contact roller and the belt edge to allow the normal running of the belt with acceptable swaying. When swaying exceeds normal limit, the belt edge pushes the contact roller, which drives the switch and operates the contacts. The switch reset automatically when the belt resumes normal running.

ORDER INFORMATION

PULL CORD SWITCH SERISES PSW



BELT SWAY SWITCH SERIES BSW



ORDER INFORMATION

Series: ESW Electronic Speed Switch for Under Speed/ Zero Speed Sensing

